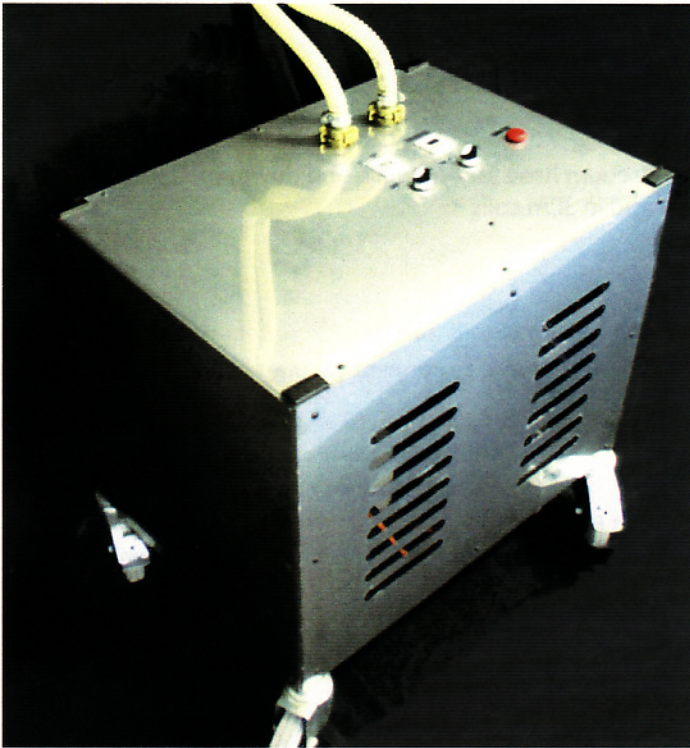


# Vacuum Station



Vacuum station 2 channel.  
Part ref: 6043

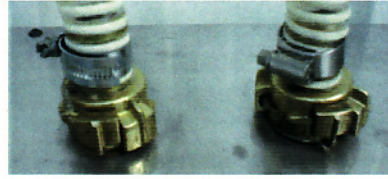
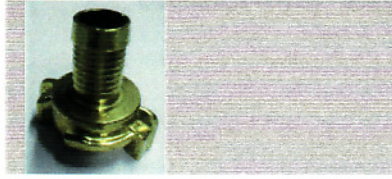


The continued success of the Light RTM process which employs vacuum as the main mould closing clamping and infusion power has led to greater need for moulders to seek better vacuum systems designed specifically for this process. M.V.P. now offer a complete vacuum station which has been designed for high vacuum security and optimized energy savings. Based upon two individual vacuum pumps, one for high vacuum and the other for medium vacuum use the unit brings unparalleled features for the infusion and Light RTM moulding industry.

Housed in a rugged stainless steel trolley mounted cabinet the controls feature digital vacuum level indication and precise vacuum set points. Normal over load protection and fuses are incorporated requiring only simple plug and use operation from a standard 13 amp single phase outlet. To provide exceptional low running costs both vacuum pumps switch off once vacuum is reached extending motor and pump service life and running costs. Built in, in-line filters prevent plant debris from entering the precision pump vanes and thus keeping high vacuum quality at all times. Individual on off switching with power on indication is also provided upon the control cabinet fascia. The standard system pumps provide quality vacuum control using two 17 cubic metres per hour vacuum delivery. MVP considered that the often onerous and costly task for the new user having to source contractors to install the workshop vacuum pipes and fittings needed to be addressed with a simple and low cost solution which can be carried out easily by the client themselves. To this end the new Vacuum station system is supplied available with all the pipes and fittings needed for an average moulding shop installation. Simple one screw wall pipe fixing and continuous vacuum secure flexible reinforced pipe provides a very economic vacuum plant installation both in reducing the time needed to install and rapid to connect low cost vacuum tight push in fittings.



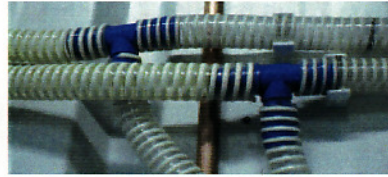
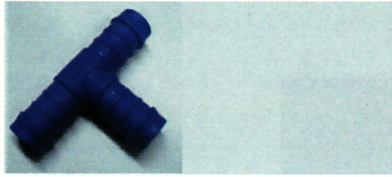
# Vacuum Station



Part Ref: 3245  
Connects vacuum station to vacuum ring main



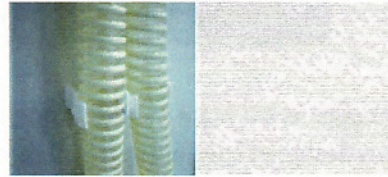
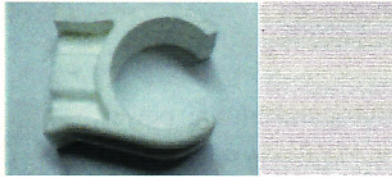
Part Ref: 6024  
Vacuum hose for ring main and downpipes  
sold in 30m coils



Part Ref: 6026  
Vacuum T piece to connect vacuum hose



Part Ref: 6029  
Vacuum fitting for extending ring main or downpipes



Part Ref: 6030  
Clips for mounting vacuum hose



Part Ref: ASSY0338  
Outlet: Wall mounted outlet complete with screwed wall elbow, flexible stainless steel braided short hose and isolation valve with filter.



Part Ref: ASSY0337  
Outlet: Push fits onto vacuum hose includes isolation valve with filter and non return valve. Ideal for suspended overhead connection.



Part Ref: 0462, Female connector  
Part Ref: 0463 Male connector  
Alternative quick connection, male section screws direct into outlets ASSY0338 and ASSY0337 above.

For more information, contact:

## MAGNUM VENUS PLASTECH

**MVP Corp HQ/Mfg./Sales**  
5148 113th Ave. N.  
Clearwater, FL 33760 USA  
tel: (727) 573-2955  
fax: (727) 571-3636

**MVP Technology Center**  
1862 Ives Ave.  
Kent, WA 98032 USA  
tel: (253) 854-2660  
fax: (253) 854-1666

**MVP Plastech UK:**  
Chilsworthy Beam, Gunnislake,  
Cornwall, PL18 9AT UK,  
tel:+44 (0) 1822 832621  
fax: +44 (0) 1822 833999

[www.mvpind.com](http://www.mvpind.com) - [www.plastech.co.uk](http://www.plastech.co.uk)

