

0002 Reusable Mushroom Seal Channel Profile 10mm x 5mm. Ideal profile for rapid and accurate forming of the groove profile during mould build to take the Mushroom seal 3202 below. Supplied in 25m coils



3202 Mushroom LRTM Seal Green Silicone. A primary resin seal (Inner), this highly resilient silicone gives a long moulding cycle life. Fits 10 x 5mm groove. Designed for 1mm seal compression. Supplied in 25m coils



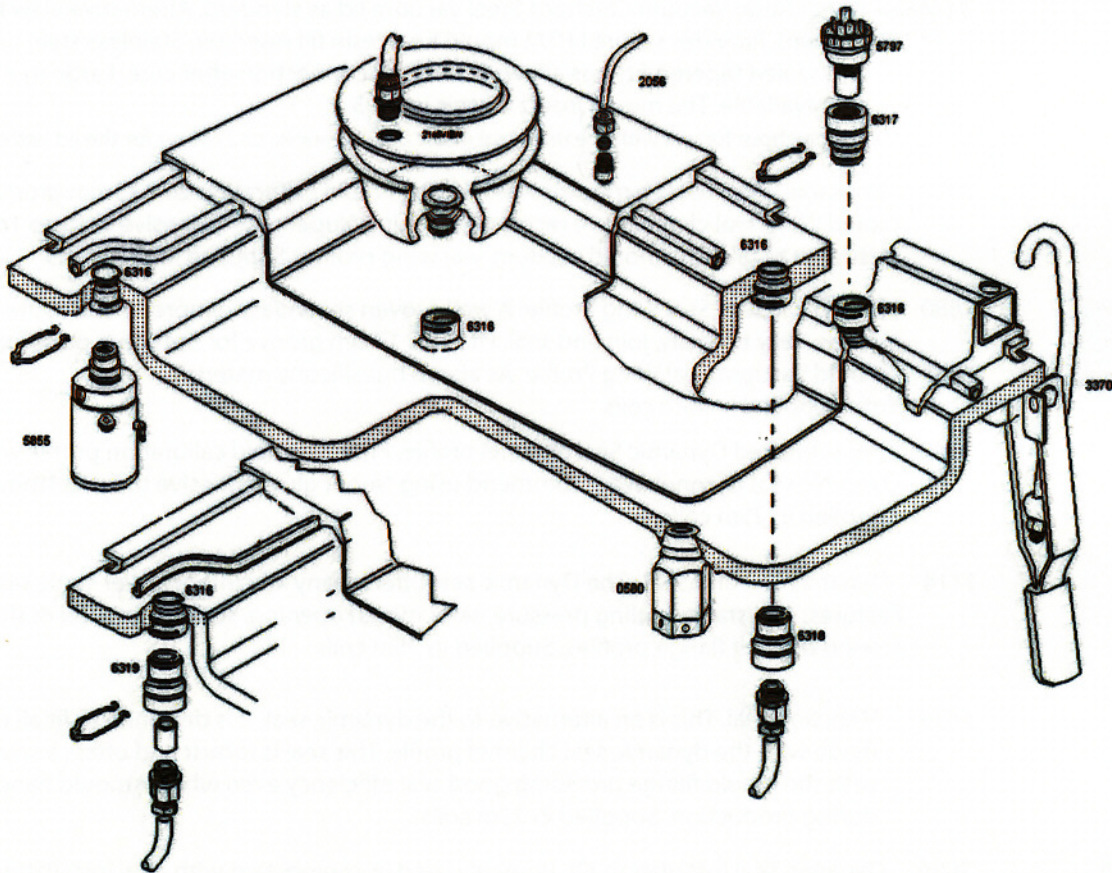
3370 Latch Clamp. To assist initial closure of peripheral vacuum seal. Can be screwed to mould edge wooden frame or welded to steel frame.



0580 Air Ejector Designed to be bonded flush with mould face. In operation it retracts the face and simultaneously forces compressed air between the mould and moulded part.

1949 Control button and fittings for air ejector complete with air pipes.

See also Machinery, Turbo Autosprue, PVSensor, Vacuminder and Vacuum Station literature for more Light RTM accesories



For more information, contact:

MAGNUM VENUS PLASTECH

MVP Corp HQ/Mfg./Sales
5148 113th Ave. N.
Clearwater, FL 33760 USA
tel: (727) 573-2955
fax: (727) 571-3636

MVP Technology Center
1862 Ives Ave.
Kent, WA 98032 USA
tel: (253) 854-2660
fax: (253) 854-1666

MVP Plastech UK:
Chilsworthy Beam, Gunnislake,
Cornwall, PL18 9AT UK,
tel:+44 (0) 1822 832621
fax: +44 (0) 1822 833999

www.mvpind.com - www.plastech.co.uk



Light RTM Accessories



6316 Universal insert and clip - Designed to accommodate the following mould connections; Turbo Autosprue, PV Sensor Insert Adaptor, 10mm Injection Adaptor, 10mm Vacuum Adaptor, 6mm Vacuum Connection, 3/4" Vacuum Connection Adaptor, Vacuum Catchpot and Blank Plug.



6319 10mm resin feed connection adaptor for universal insert. Designed to connect 10mm injection pipe to the mould via the universal insert bonded in during mould manufacture on the resin flow channel.

6319-6mm 6mm resin feed connection adaptor for universal insert. Can also be used as a 6mm venting point.



6318 10mm Vacuum Connection Adaptor for universal insert. Designed to connect a 10mm flange vacuum line to the mould. The universal insert bonds into either the upper or lower half of the mould to accommodate this adaptor.



6315 Designed to connect either a Geka or 3/4" Vacuum line to the mould via the universal insert.

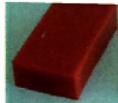


6328 Blank plug for universal insert, for use when the insert is not in use it can simply be blanked off.

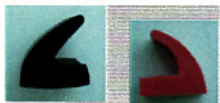


2146-VIEW Direct Resin Vacuum Catchpot Steel vacuum lid as standard. Alternative view lids available (as shown). Provides secure LRTM mould final resin fill reservoir. Stainless steel body with locked and sealed tapered fittings allows instant disconnection after cure. Large multi channel Catchpots also available. The mould insert for this is 0093.

The catchpot for use with the universal insert is 2146-VIEW UNI OR 2146-UNI for the lid without a view glass.



3391 Reusable Wing Seal channel profile. Provides rapid calibration 26 x 13mm groove when making mould Wing seal channel. We recommend using "super glue" adhesive to fix to 1mm flange wax. Designed to take the mould vacuum seal wing profile. Supplied in 25m coils



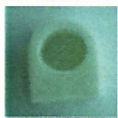
1680 Mould Vacuum Seal Wing Profile. A well proven secondary neoprene seal (Outer) for all LRTM moulds. Easy to apply, join and seal. Fits 26 x 13mm groove for optimum performance.

5895 Mould Vacuum Seal Wing Profile. As above but silicone material.

Both Supplied in 25m coils



3340 Reusable Red Dynamic Seal channel profile. Provides rapid calibration profile when making mould Dynamic seal channel. We recommend using "super glue" adhesive to fix to 1mm flange wax. Supplied in 25m coils

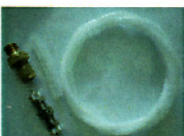


1114 Dynamic Silicone Seal. The Dynamic seal offers many advantages over static seal.

Features: adjustable sealing pressure, safer mould opening, seals on vertical draft face and self-adjusting around difficult flange profiles. Supplied in 25m coils



6439 V section seal. This is an alternative to the dynamic seal. It is designed to fit all moulds which have been made with the dynamic seal channel profile. This seal is robust and offers a smaller seal contact area with the mould flange providing good seal efficiency even when a mould flange has gelcost applied during production. Supplied in 25m coils



2056 Dynamic Seal Installation Kit. Primarily used in conjunction with new installations of Dynamic seal 1114 above. The kit includes: seal mould insert, nylon connection tube, nylon connection tube former and silicone jointing tube. Complete with instructions for use.



4530 Reusable Resin Flow Channel Profile. Designed for rapid calibration of the resin flow channel during the mould manufacture. Supplied in 25m coils



6438 Small Reusable Resin Flow Channel Profile. As above but approximately 1/3 the cross section. Designed for small moulds upto 1m² approximately 4m of resin channel.