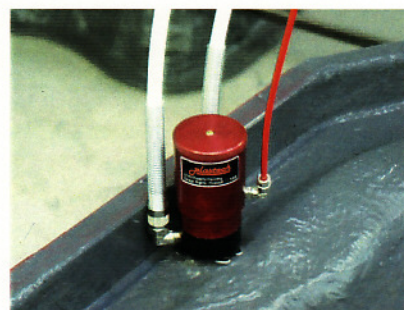
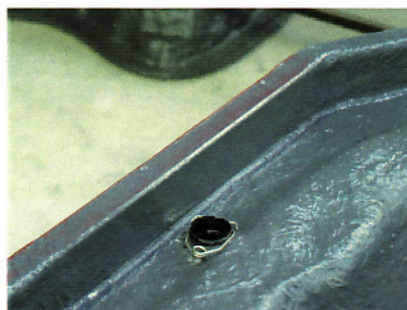


Turbo Autosprue™



Many will agree that to make closed mould production user friendly, an absence of liquid resin within the close proximity of the operator is the ideal situation. This can be achieved by using the Turbo Autosprue™ automatic injection valve. The Turbo Autosprue™ valve locks into the production mould cavity and is controlled by the injection machine. The valve is connected to the machine nozzle (via quick connect) and upon start of injection, the Turbo Autosprue™ opens, allowing mixed resin to pass into the mould cavity. On completion of injection, the Turbo Autosprue™ closes, isolating itself from the mould cavity. It is flushed clean at the mix-head cleaning cycle ready for next production injection run. The valve is complete with the necessary quick release couplings, resin supply hose, waste hose and signal pipes with connector.



5855 – Turbo Autosprue™ with Quick Connector fittings with a nylon resin feed hose and clear drain pipe.

5856 - Turbo Autosprue™ with Quick Connector fittings with a heavy duty resin feed hose and clear drain pipe.

5862 - Additional Turbo Autosprue™ 'Locksert' including Clip



The TAS has been tested in all positions Vertical up, Vertical down and horizontally and will operate and flush efficiently. Also tests have proven long service life using all known thermoset resin systems, filled or unfilled.



- Suitable for low/high Temperature applications
- Exceptionally low maintenance - filled or unfilled resins
- Self locks into mould using 'Locksert'
- Compact 12 x 5cm
- Low cost
- Open/closed indicator
- Suitable for all thermoset resin systems
- Long life PTFE fluid seals
- Seal change possible from mould face without valve removal
- Vortex flow provides efficient flush
- Safe - designed to CE standards

For more information, contact:

MAGNUM VENUS PLASTECH

MVP Corp HQ/Mfg./Sales
5148 113th Ave. N.
Clearwater, FL 33760 USA
tel: (727) 573-2955
fax: (727) 571-3636

MVP Technology Center
1862 Ives Ave.
Kent, WA 98032 USA
tel: (253) 854-2660
fax: (253) 854-1666

MVP Plastech UK:
Chilsworthy Beam, Gunnislake,
Cornwall, PL18 9AT UK,
tel:+44 (0) 1822 832621
fax: +44 (0) 1822 833999

www.mvpind.com - www.plastech.co.uk

